

# ScopeCam 2S

 User Manual 

# 01 Camera Diagram

Wi-Fi button ❶

Power on/off switch ❷

❸

LED1  
Red(recording status)  
Blue(Wi-Fi status)

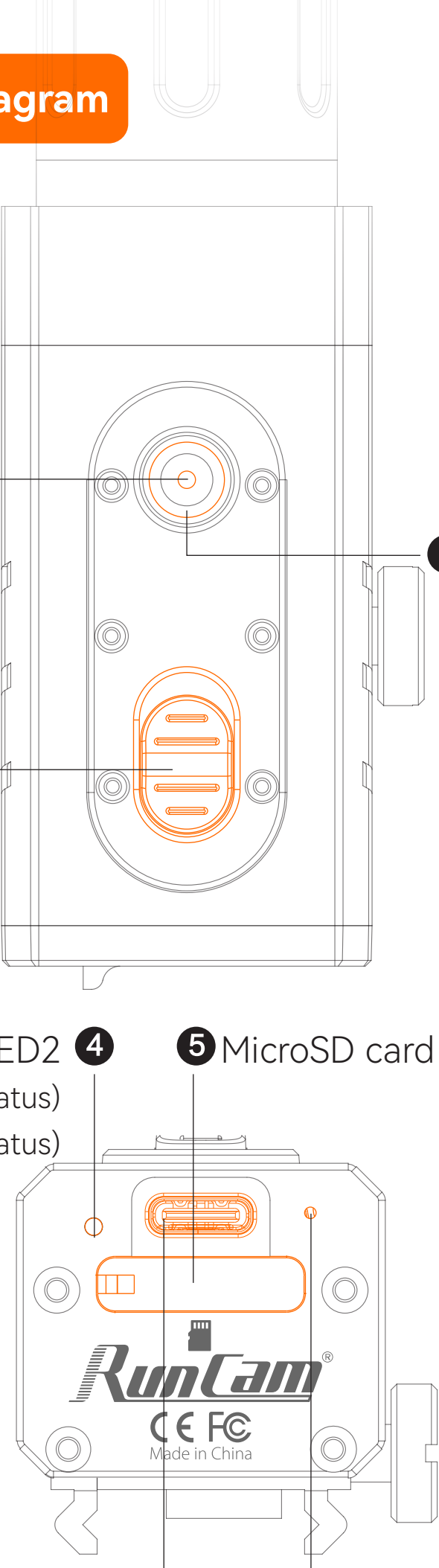
LED2 ❹

Red(recording status)  
Green(Charging status)

❺ MicroSD card slot

Type-C ❻

❼ Microphone



## 02 Camera Operations

Functions	Operations
Start recording	-Slide the switch upward, camera powers on and starts recording, LED1&2 blink red slowly.
Stop recording	-Slide the switch backward, camera stops recording and powers off, LED1&2 go off.
Flashback Function	-Type-C flashback cable is required. -Turn on flashback function via RunCam App.
Turn on Wi-Fi	-When camera is off, long press Wi-Fi button for 3 seconds, camera will power on and turn on Wi-Fi. -When camera is on, long press Wi-Fi button for 3 seconds, camera will turn on Wi-Fi. -Wi-Fi awaiting connection: LED1 blinks blue slowly;Wi-Fi connected: LED1 solid blue light on.
Turn off Wi-Fi	-Long press Wi-Fi button for 3 seconds, Wi-Fi is off and camera powers off, LED1&2 go off. -Wi-Fi waits and gets unconnected for 3 minutes, Wi-Fi turns off and camera powers off, LED1 &2 go off.
Low battery alarm	-When the camera's battery is running low, it vibrates once every 30 seconds, and will automatically power off after approximately 5 minutes.
Charging	-Please use a regular phone charger or external power bank to charge the camera. The charging indicator light will be solid green while charging, and it will turn off once fully charged. It takes about 2 hours and 30 minutes to fully charge.
Forced shutdown	-If the camera cannot be powered off manually, press and hold the Wi-Fi button for 8 seconds to force a shutdown.
Abnormal status	-Card issue (no card, card full, low write speed, etc.): LED1&2 both flash red quickly. -Wi-Fi failure: LED1 stays blue for 1 second, then turns off. -Power-on issue: Unable to detect the lens module, LED1 blinks red quickly, camera vibrates 5 times, and powers off automatically.

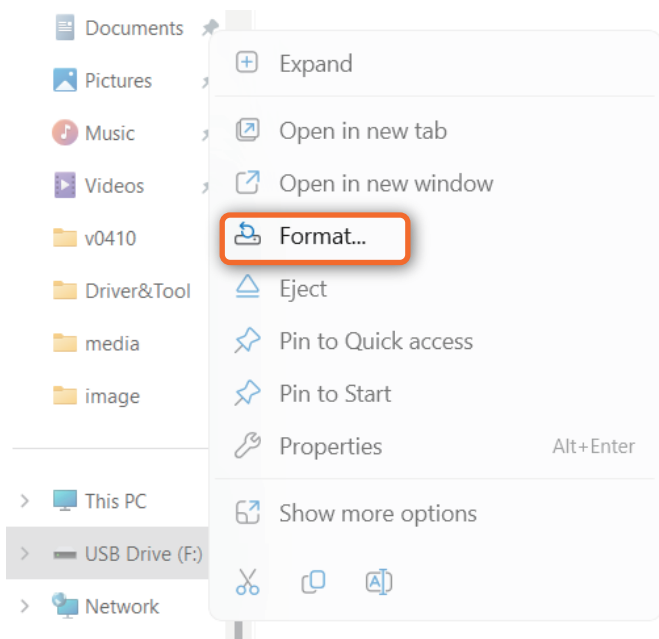
## 03 Micro SD Card

Recommended U3 card, supports up to 512GB MicroSD card.

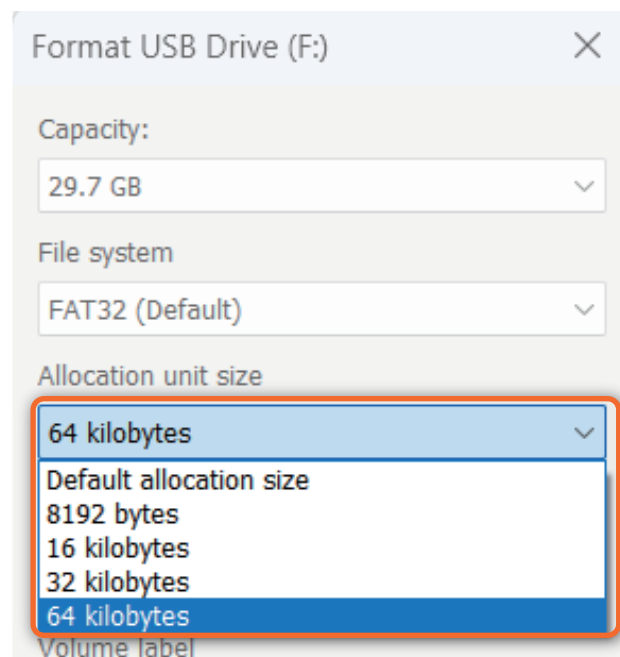
**Note:**

1. Please handle the microSD card carefully to avoid contact with liquid, dust, or debris. For safety, turn off the camera before inserting or removing the microSD card. Use the card within the temperature range specified by the manufacturer.
2. If the camera fails to record, first check the capacity of the microSD card. It is recommended to use a card with a capacity of 64GB or higher.
- 3.If it is necessary to use a microSD card with a capacity of less than 64GB, please format the card using a computer. Refer to the following steps:
  - (1) Insert the microSD card into a card reader and connect it to your computer.

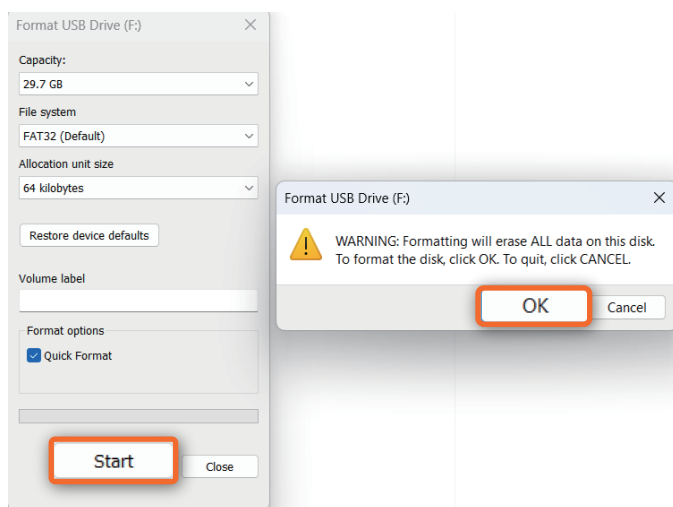
(2) Locate the microSD card in your file explorer, right-click on it, and select “Format.”



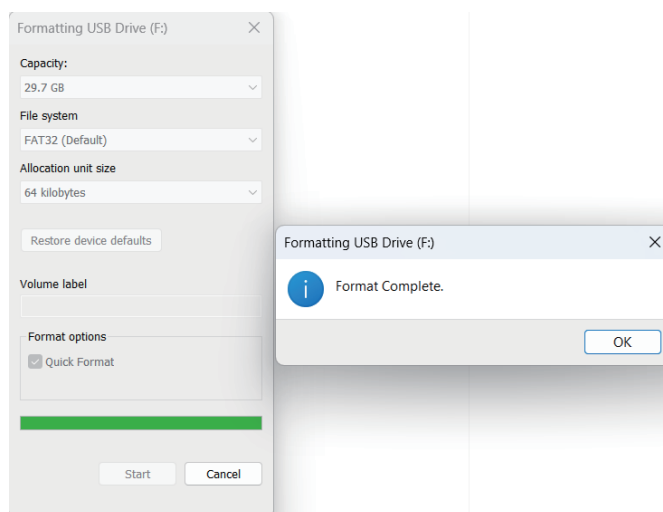
(3) Set the Allocation unit size to 64KB.



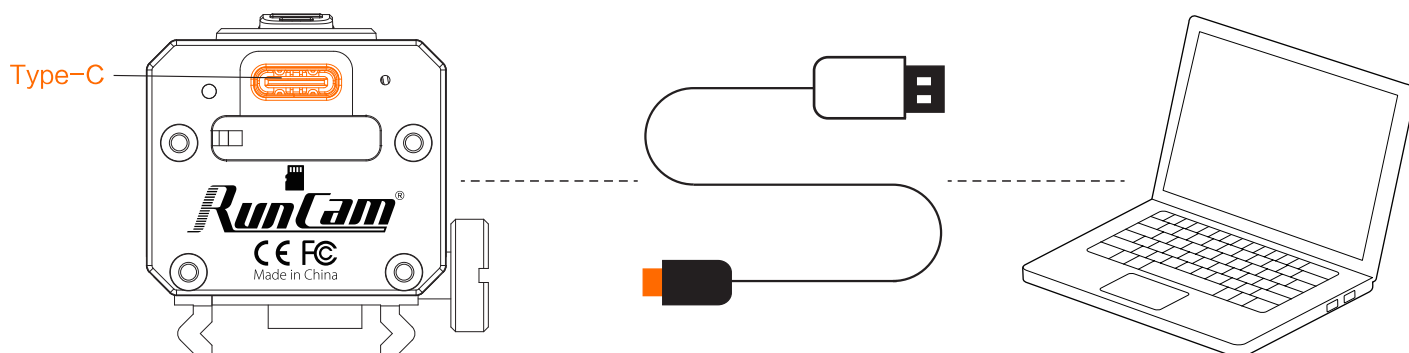
(4) Click “Start” to begin the formatting process, and confirm when prompted.



(5) Wait until the formatting process is complete.



## 04 PC Connection





#### U-disk Mode:

Use a Type-C to USB cable to connect the camera to a computer. It will automatically enter U-disk mode upon powering on, with LED1 and LED2 solid red.

#### WEBCAM/PCCAM/UVC Mode:

In U-disk mode, press the Wi-Fi button briefly to switch to WEBCAM/PCCAM/UVC mode.

#### Notes:

- 1.If the camera is not recognized after connecting to the PC, please ensure that a microSD card is inserted into the camera.
- 2.If the microSD card's data cannot be read correctly, try using a different Type-C cable or switching to another USB port on the PC.

## 05 Firmware Update

For optimal camera performance, please use the latest firmware.

Manually copy the firmware file (SC2S.bin) to the root directory of the microSD card.


Scan the QR code or visit:<https://www.runcam.com/download/ScopeCam2S> for detailed instructions.

**Firmware Update Process:**LED1 red and blue light will blink alternately for about 50 seconds. Then, both light will turn off, the camera will vibrate 5 times, and power off automatically—indicating the firmware update is complete.

## 06 APP

To download the app (Android/iOS), search for "RunCam App" on Google Play or the App Store, or scan the QR code.

## 07 RunCam App Connection

- 1.After powering on the camera, long-press the Wi-Fi button to enable Wi-Fi. The blue LED will blink slowly while waiting for a connection.
- 2.On your mobile phone, go to WLAN/Wi-Fi settings, find "SC2S\_XXXXXX", and enter the password: 1234567890.
- 3.Open the RunCam App, tap the icon , Open the RunCam App, tap the icon.

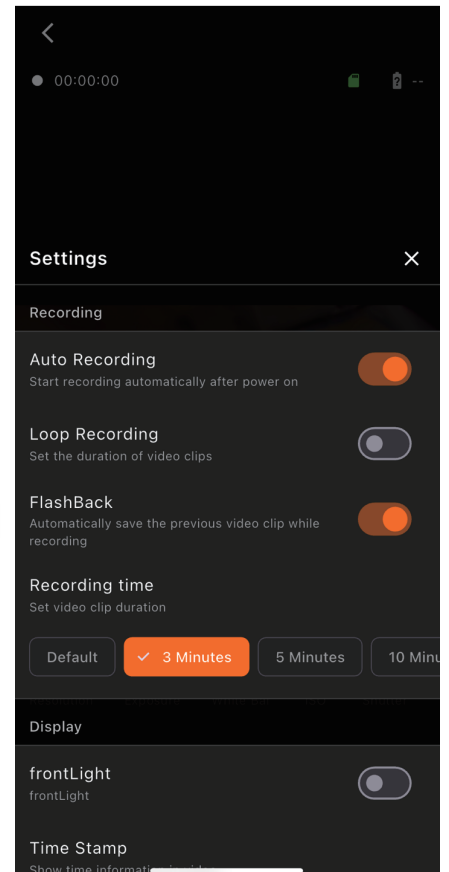
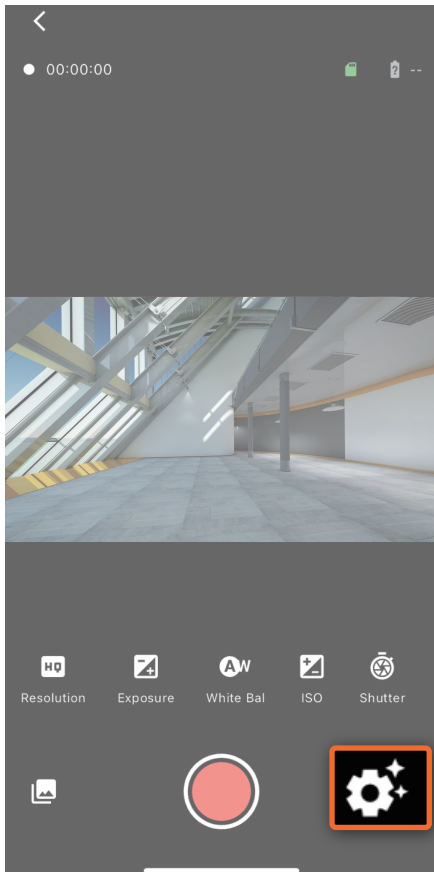
## 08 Flashback Function

Please power on the camera and connect it to the RunCam App. Refer to Section 07 for App connection.

**Note:** The Flashback function is only available when Wi-Fi is turned off.

**Steps to use the Flashback function:**

- 1、 Click the settings icon .
- 2、 Find the "Flashback" option and enable this function.



- 3、 Manually restart the camera. After powering on, it will enter flashback mode.
- 4、 Plug the flashback cable into the ScopeCam 2S.



- 5、 Ensure a microSD card is properly inserted. Short press the button on the flashback cable to start recording. The flashback video consists of 10 seconds before pressing the button and 15 seconds after pressing it. The recording will stop automatically after 15 seconds, and a maximum of 25 seconds of video will be saved.
- 6、 After recording a clip, the camera will return to flashback standby mode.