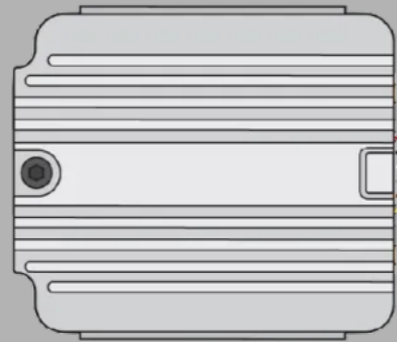
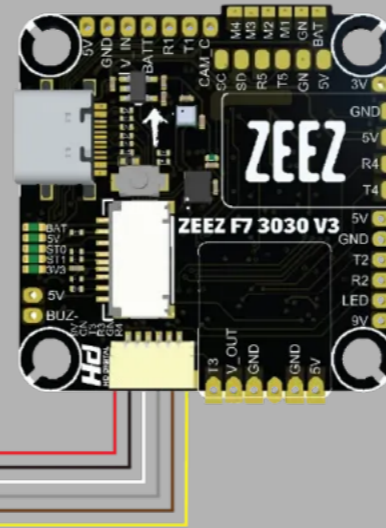


## DJI TRANSMITTER



2-6S  
DJI AIR UNIT: 7.4V-26.4V  
CADDX VISTA: 7.4V-26.4V



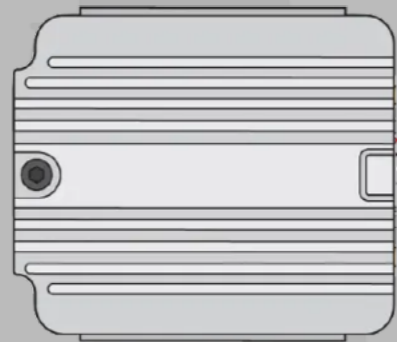
**IMPORTANT!**  
TURN ON SBUS FAST IN YOUR GOGGLES  
MENU > SETTINGS > DEVICE > PROTOCOL > SBUS FAST

IN BETAFLIGHT, GO TO THE CLI COMMAND  
TYPE: SET SBUS\_BAUD\_FAST = ON > SAVE > ENTER

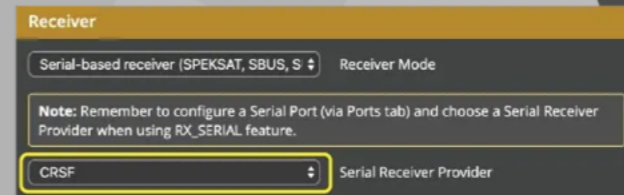


Identifier	Configuration/MSP	Serial Rx
UART 3	<input checked="" type="checkbox"/> 115200	<input type="checkbox"/>
UART 4	<input type="checkbox"/> 115200	<input checked="" type="checkbox"/>

## DJI GOGGLES + CRSF

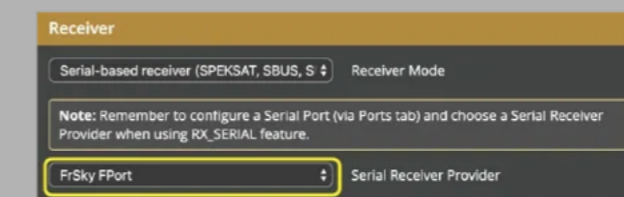


2-6S  
DJI AIR UNIT: 7.4V-26.4V  
CADDX VISTA: 7.4V-26.4V



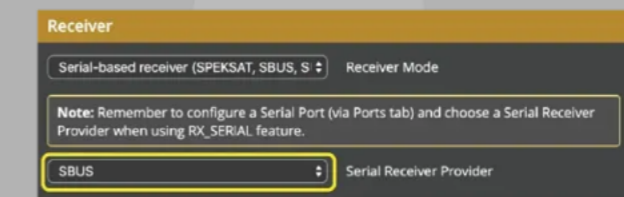
Identifier	Configuration/MSP	Serial Rx
UART 4	<input type="checkbox"/> 115200	<input checked="" type="checkbox"/>

## FrSKY F.PORT



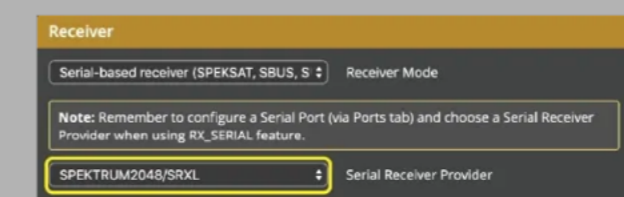
Identifier	Configuration/MSP	Serial Rx
UART 4	<input type="checkbox"/> 115200	<input checked="" type="checkbox"/>

## FrSKY SBUS



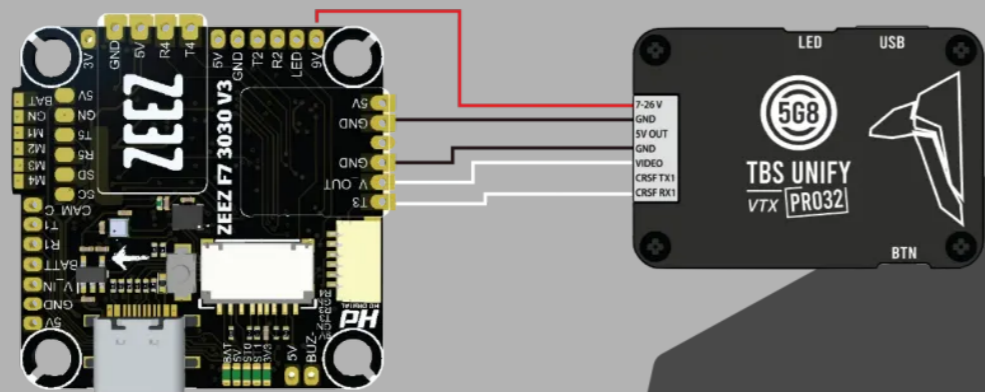
Identifier	Configuration/MSP	Serial Rx
UART 4	<input type="checkbox"/> 115200	<input checked="" type="checkbox"/>

## DSMX



Identifier	Configuration/MSP	Serial Rx
UART 4	<input type="checkbox"/> 115200	<input checked="" type="checkbox"/>

## VTX



Identifier	Configuration/MSP	Serial Rx	Telemetry Output	Sensor Input	Peripherals
USB VCP	<input checked="" type="checkbox"/> 115200	<input type="checkbox"/>	Disabled	AUTO	Disabled
UART1	<input type="checkbox"/> 115200	<input type="checkbox"/>	Disabled	AUTO	Disabled
UART2	<input type="checkbox"/> 115200	<input type="checkbox"/>	Disabled	AUTO	Disabled
UART3	<input type="checkbox"/> 115200	<input type="checkbox"/>	Disabled	AUTO	Disabled
UART4	<input type="checkbox"/> 115200	<input checked="" type="checkbox"/>	Disabled	AUTO	Disabled
UART5	<input type="checkbox"/> 115200	<input type="checkbox"/>	Disabled	AUTO	Disabled



Identifier	Configuration/MSP	Serial Rx	Telemetry Output	Sensor Input	Peripherals
USB VCP	<input checked="" type="checkbox"/> 115200	<input type="checkbox"/>	Disabled	AUTO	Disabled
UART1	<input type="checkbox"/> 115200	<input type="checkbox"/>	Disabled	AUTO	Disabled
UART2	<input type="checkbox"/> 115200	<input type="checkbox"/>	Disabled	AUTO	Disabled
UART3	<input type="checkbox"/> 115200	<input type="checkbox"/>	Disabled	AUTO	Disabled
UART4	<input type="checkbox"/> 115200	<input checked="" type="checkbox"/>	Disabled	AUTO	Disabled
UART5	<input type="checkbox"/> 115200	<input type="checkbox"/>	Disabled	AUTO	Disabled

## CAM



UART CONTROL



JOYSTICK EMULATION

## GPS

