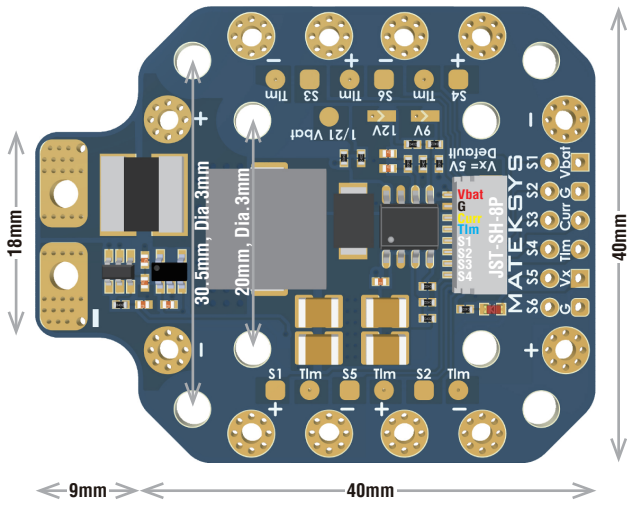


# MATEKSYS PDB-HEX

## QUICK START GUIDE

### LAYOUT



+ & - : LiPO & ESC power pads  
6~60V (2~12S)

PDB/Current Sense resistor: 140A continuous, 264A burst.

Vbat: Battery voltage

G: Ground

Curr: current sensor signal, 264A range

Tlm: Duplicates Tlm pads for BLheli32 ESC telemetry,  
Tlm pads are all shorted together

Vx: Regulator output

Vx= 5V by default, 5A cont.

Vx= 9V, 4A cont. 5A burst

Vx= 12V, 4A cont. 5A burst

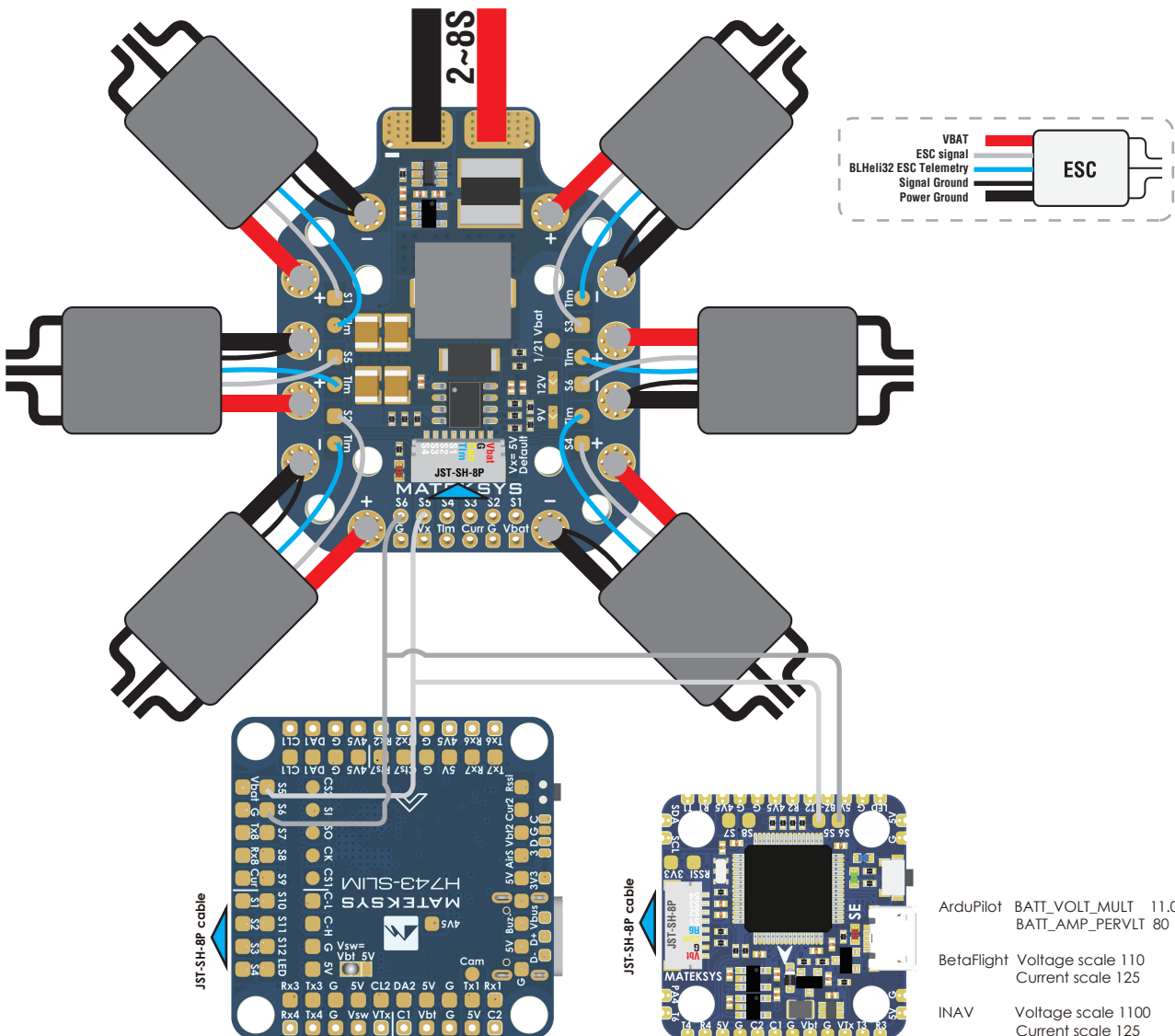
S1/S2/S3/S4/S5/S6: ESC signal

1/21 Vbat: 1K:20K voltage divider

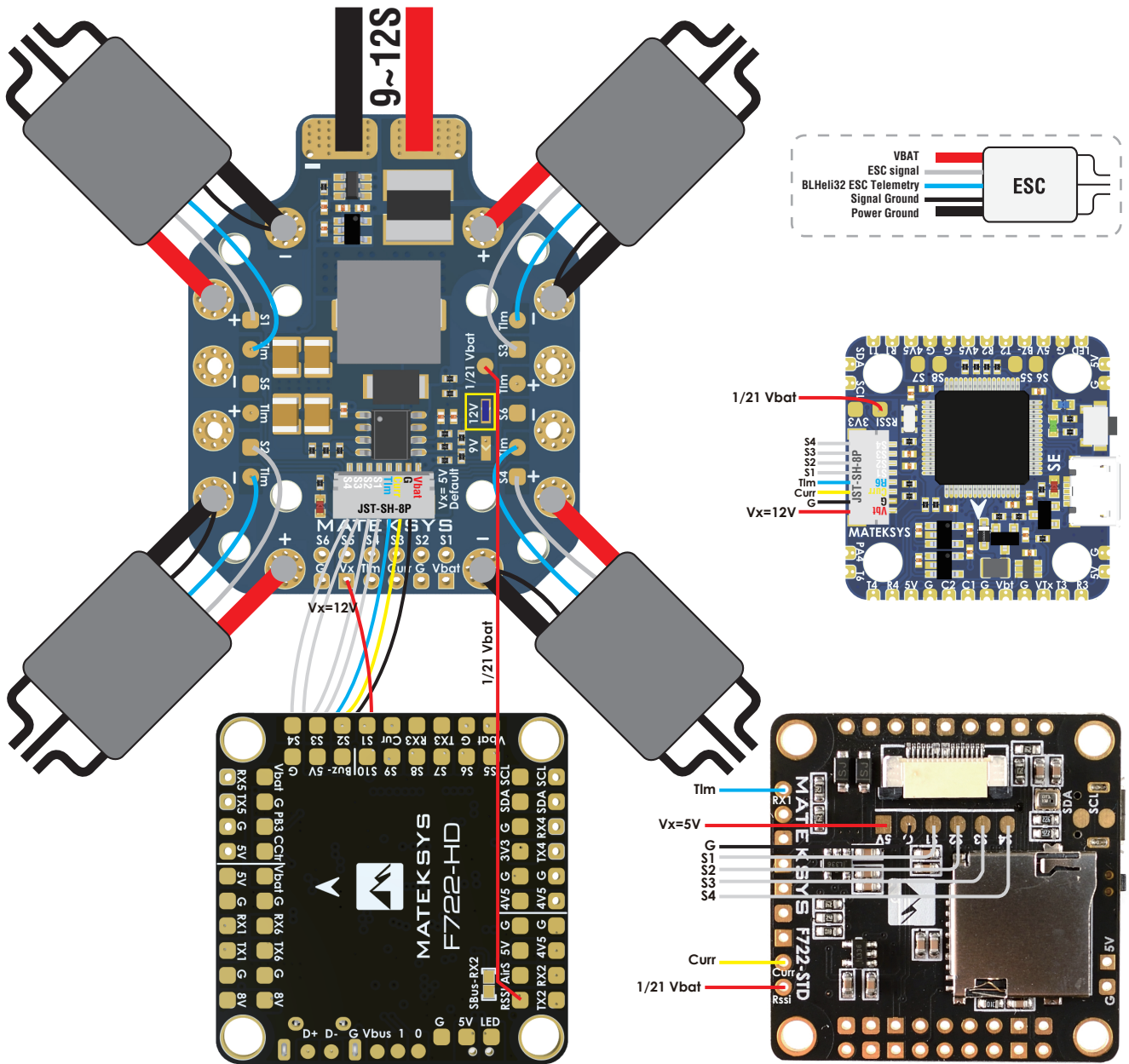
can be connected directly to MCU ADC pin



### WIRING (2~8S)



## WIRING (9~12S)



BetaFlight

CLI [resource](#) to locate RSSI pin name

RSSI pin is **C00**

then

[resource ADC\\_RSSI 1 none](#)

[resource ADC\\_BATT 1 C00](#)

[set vbat\\_scale = 210](#)

[set ibata\\_scale = 125](#)

[save](#)

```
resource SPI_MOSI 2 C03
resource CAMERA_CONTROL 1 B15
resource ADC_BATT 1 C02
resource ADC_RSSI 1 C00
resource ADC_CURR 1 C01
resource ADC_EXT 1 A04
resource PINIO 1 A15
resource PINIO 2 B03
```

INAV

CLI [get adc](#) to locate rssi\_adc\_channel

rssi\_adc\_channel is **3** by default

then

[set rssi\\_adc\\_channel = 0](#)

[set vbat\\_adc\\_channel = 3](#)

[set vbat\\_scale = 2100](#)

[set current\\_meter\\_scale = 125](#)

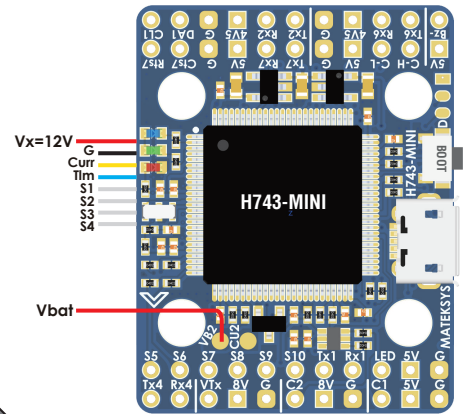
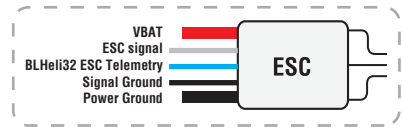
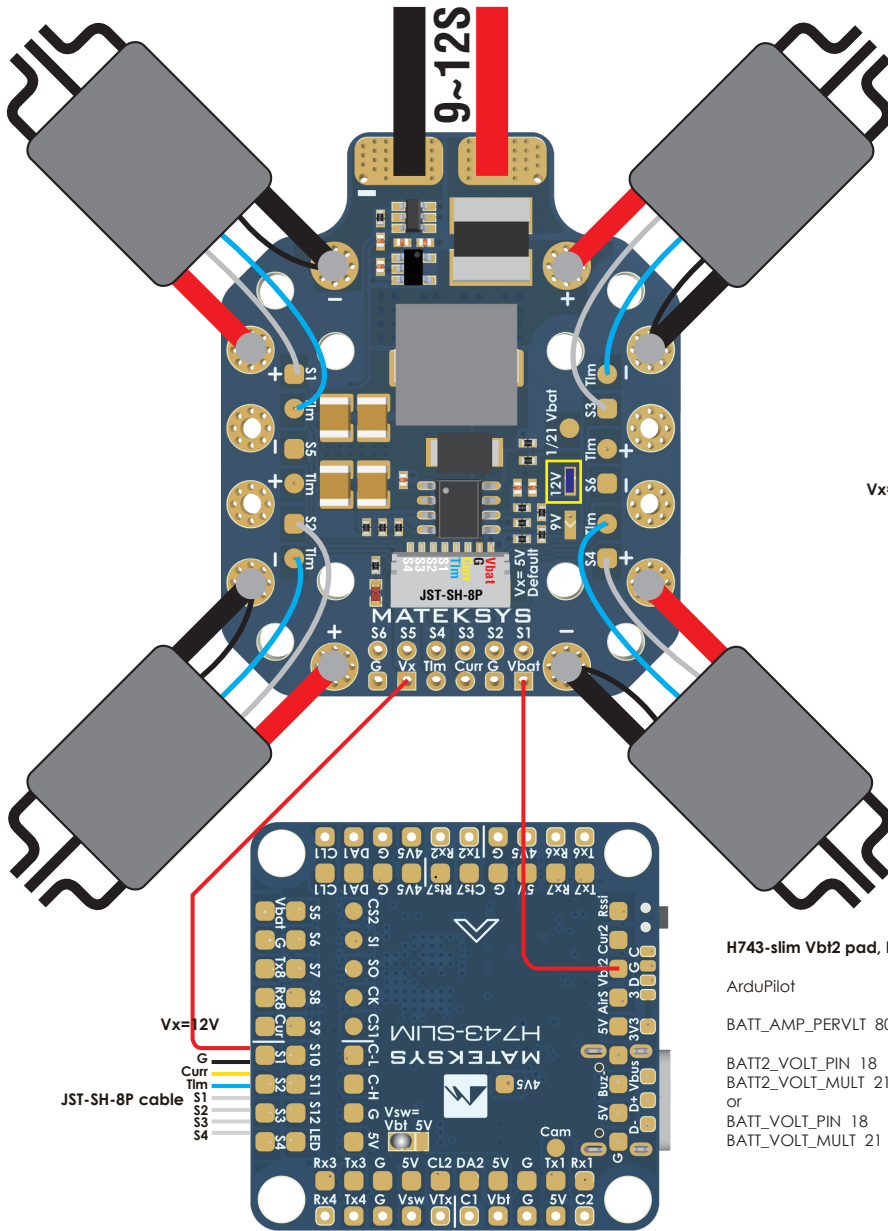
[save](#)

```
# get adc
vbat_adc_channel = 1
Allowed range: 0 - 4
rssi_adc_channel = 3
Allowed range: 0 - 4

current_adc_channel = 2
Allowed range: 0 - 4

airspeed_adc_channel = 4
Allowed range: 0 - 4
```

# WIRING (9~12S)



H743-slim Vb12 pad, H743-mini VB2 pad support 0~69V.

ArduPilot

BATT\_AMP\_PERVLT 80

BATT2\_VOLT\_PIN 18

BATT2\_VOLT\_MULT 21

or

BATT\_VOLT\_PIN 18

BATT\_VOLT\_MULT 21

BetaFlight

CLI

`resource ADC_BATT 1 A04`

`set vbat_scale = 210`

`set ibatd_scale = 125`

`save`