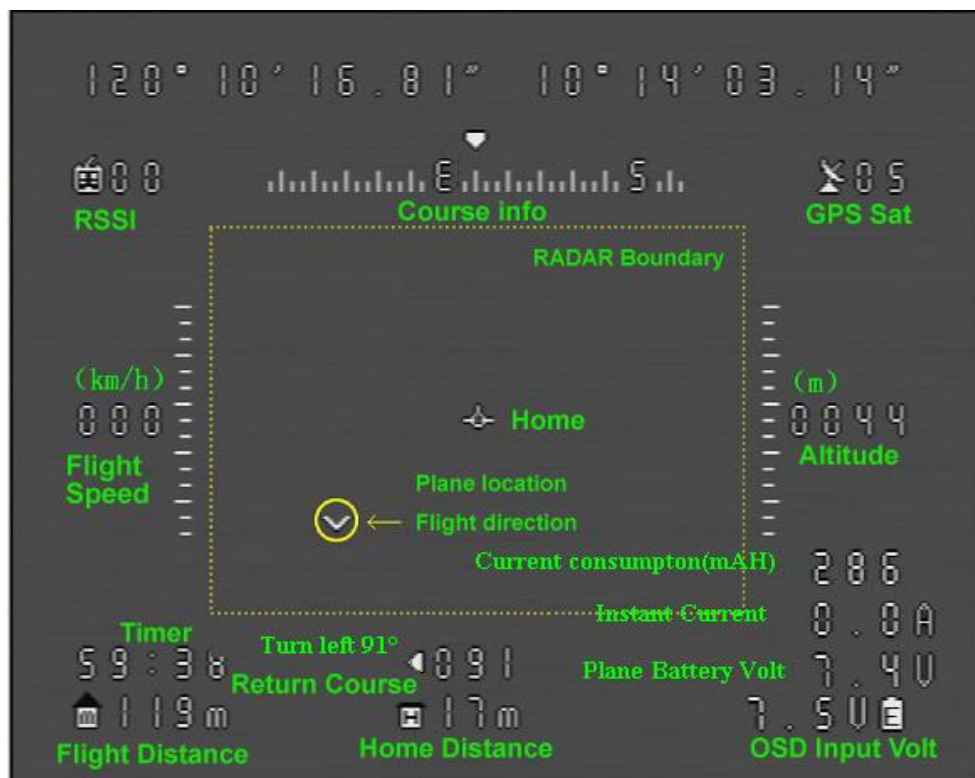
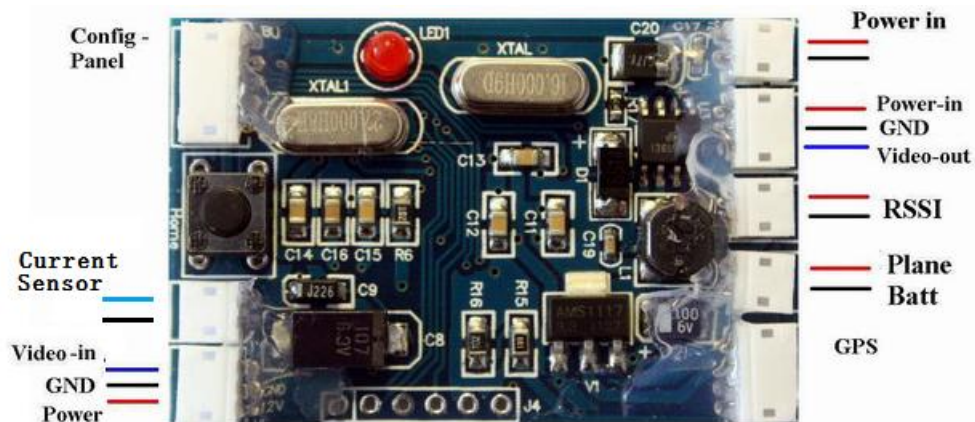


SUPPO OSD V3.71 10HZ/current sensor



Connention Pins

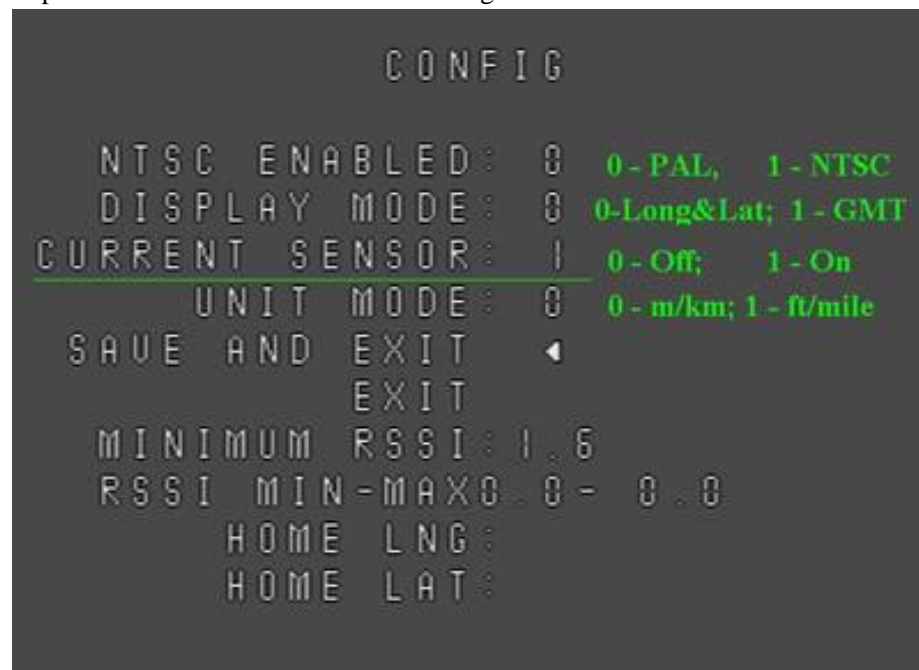
Connector's description

Current sensor	To the add-on Current sensor from SUPPO	RSSI	Connect to your radio receiver's RSSI port
Config panel	Connect to button panel	Main Batt (to RC plane's battery)	Connect to your airplane's battery pack (monitor plane's voltage Max 28V). As 11.7v shown on left)
Video In	To you Camera	Video out	For the OSD video output
GPS	To the GPS unit supplied	Power in	Connect to power source for your OSD (as Voltage 4.5V shown on left)

Configuring OSD:

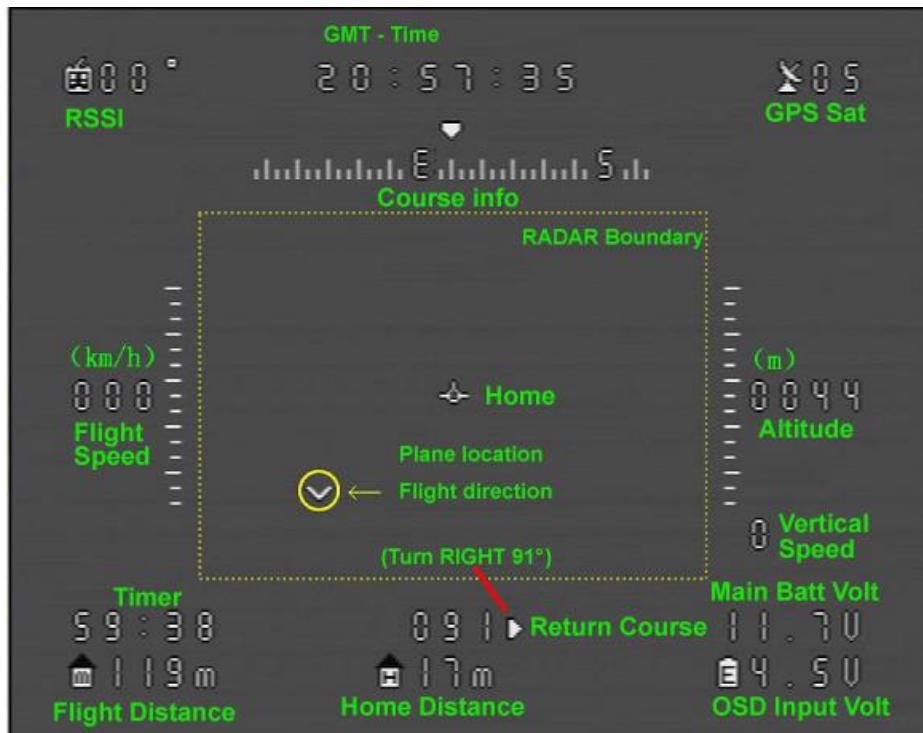
Press button **"Menu"** on "Config Panel" to enter system configuration

Use "Option SW" and "Select" button to configure



Button and Light

“Home”	Record home location, Max RSSI, Clear timer, clear distance value
“Menu”	Enter configuration menu
“Switch”	Switch between configuration options
“Select”	Select each Option’s value
“Reset”	Restart OSD
Signal Light	Off : No power; On: connecting GPS, waiting for GPS signal; Flash: working good



System Config menu	description	
NTSC ENABLE	0 – Disabled (for PAL)	1 – Enabled (for NTSC)
DISPLAY MODE	0 –Longitude and Latitude	1 – GMT time
Current Sensor	0 – No Current sensor Will not show any current infomation	1 – Current sensor connected Current consumption information shown
UNIT MODE	0 – Unit at meter (km when over 10km), Speed in km/h	1 – display Unit at feet (mile when over 10mile), speed in mph

Typical FPV with OSD set up:

1. Camera ----- ‘Video in” OSD “Video out” to ---- Suppo V-Tx , video transmitter.
2. Connect GPS, and Main Batt wire to --- RC main battery
3. Connect RSSI to your RC Receiver (**Warning**: potential dangerous, could damage your RX. not recommend to do so if you don’t well understand your Radio RX)
4. Connect 9-12V power to Suppo V-tx to power up Suppo V-Tx, OSD and the camera.

Important Notice, care fully check the power wire connect Camera, OSD and Video Tx. Wrong power wiring could damage your camera OSD and video transmitter.

Important: Never mix up the Video input (VI) wire with the Video output wire (marked VO), otherwise, it could damage your cam or video transmitter!

Setting RSSI Min – Max value:

1. On ground power up TX and RX, press “set home” button, OSD will record RSSI Max;
2. On ground, power off TX, press “Menu” button, OSD will record RSSI Min value.
3. Select Save and Exit to save RSSI Min Max value.

Notes:

GPS first start will take 1 minute. Re-start only 10 second.

Please note that you need to set “HOME” location (press home button) each time to get the right “Flight Distance” and “Home Distance”, and “Return Course”

Specifications:

	Input Volt	Weight	Size
OSD	5-12V	2g	49*33*6.5m
GPS	3.3V	10g	
Current Sensor	7-35V, 100A	8g	31*35mm
Power consumption:	Max: 1.1W	Plane battery detect max 28V	

