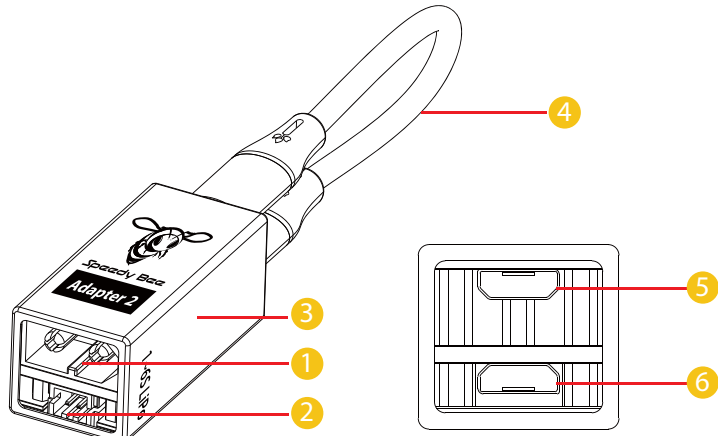


SpeedyBee Adapter 2 User Manual

Instruction Diagram



- ① XT60 Connector(1-6S power input)
- ② PH2.0 Connector(1-6S power input)
- ③ LED Indicator
- ④ Liquid Silicone Cable
- ⑤ Micro USB Port 1
- ⑥ Micro USB Port 2

Power Input

- The XT60 connector(①) and the PH2.0 connector(②) both allow 1-6S LiPo batteries input.
- **But for 1S batteries, 3.8V or above is required.** Because some quadcopters may consume large current and significantly lower down the output voltage from the Adapter 2.

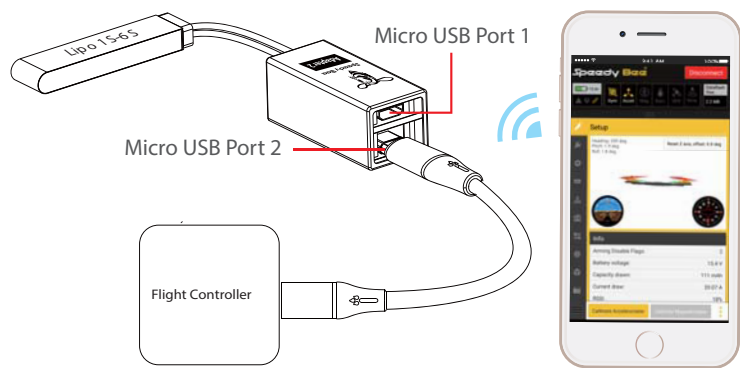
LED Indicator Definition

- **Solid RED** - Power applied.
- **Blinking RED** - Flight controller connected but WiFi not connected.
- **Blinking GREEN** - WiFi connected but flight controller not connected.
- **Solid GREEN** - Flight controller and WiFi both connected.

Micro USB Connection

- The micro USB connectors on both ends of the silicone cable are identical. So when you receive your Adapter 2, just plug any end of the cable into the Micro USB Port 2(⑥), then use another end to connect to your flight controller.
- **DO NOT use the end of the cable which is connected to the Micro USB Port 2 to connect to your flight controller,** that is not dangerous but useless.
- It's safe to power the Adapter 2 when the silicone cable is connected to the body on both ends.
- Plug the cable back into the Micro USB Port 1 after use.

Wiring Guide

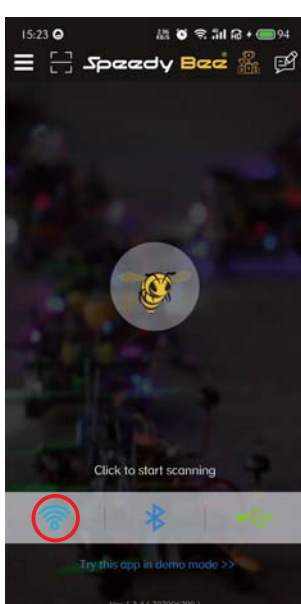


NOTE

Always unplug the micro USB connector on the Micro USB Port 1 end, then connect it to your flight controllers.

App Instructions

- **Get the App**
Search 'Speedy Bee' on Google Play/App Store, or download the Android .apk file on our website: <https://www.speedybee.com/download>
- **Connect with the App**
Open the App > Click the WiFi button shown as below > Connect to the WiFi named with 'SBAdapter2_XXXX'. Done.



Simplifying FPV
www.SpeedyBee.com