

DYS-702 5.8GHz Diversity 7" LCD Monitor Receiver with Folding sunshade

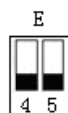
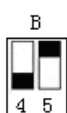
Specification:

1. Screen size:7"
2. Screen type: TFT LCD Screen/long life, LED backlight
3. Resolution: 800*480
4. Brightness: 450cd/m2
5. Contrast: 500:1
6. View Angle: 140/120degree (Horizontal/Vertical)
7. Working Voltage: DV 7-12V(center positive) or 11.1V Li-battery
8. Power Consumption: < 8w
9. Size: 180mm x 133mm x 28mm
10. Antenna Connection: SMA
11. Built-in 5.8Ghz Dual diversity receiver automatically for best reception
12. Built-in 1CH 5.8Ghz AV output and 1CH AV input
13. Working temperature: -10°C~+ 65 °C

Features:

1. Built-in Dual Receiver Automatically for best reception Automatic Antenna Switching
2. Not affect by 2.4GHz R/C Radios
3. AV Receiver with Diversity inputs
4. Small, light weight, durable
5. No Blue Screen
6. Folding sunshade
7. 2 DC port
8. **4 Bands and total 32 Channels**

Band Selection and Resulting Frequencies



- | | | | |
|----------------|--------------|--------------|--------------|
| • CH1: 5865MHz | CH1: 5733MHz | CH1: 5705MHz | CH1: 5740MHz |
| • CH2: 5845MHz | CH2: 5752MHz | CH2: 5685MHz | CH2: 5760MHz |
| • CH3: 5825MHz | CH3: 5771MHz | CH3: 5665MHz | CH3: 5780MHz |
| • CH4: 5805MHz | CH4: 5790MHz | CH4: 5645MHz | CH4: 5800MHz |
| • CH5: 5785MHz | CH5: 5809MHz | CH5: 5885MHz | CH5: 5820MHz |
| • CH6: 5765MHz | CH6: 5828MHz | CH6: 5905MHz | CH6: 5840MHz |
| • CH7: 5745MHz | CH7: 5847MHz | CH7: 5925MHz | CH7: 5860MHz |
| • CH8: 5725MHz | CH8: 5866MHz | CH8: 5945MHz | CH8: 5860MHz |

Operation Instructions:

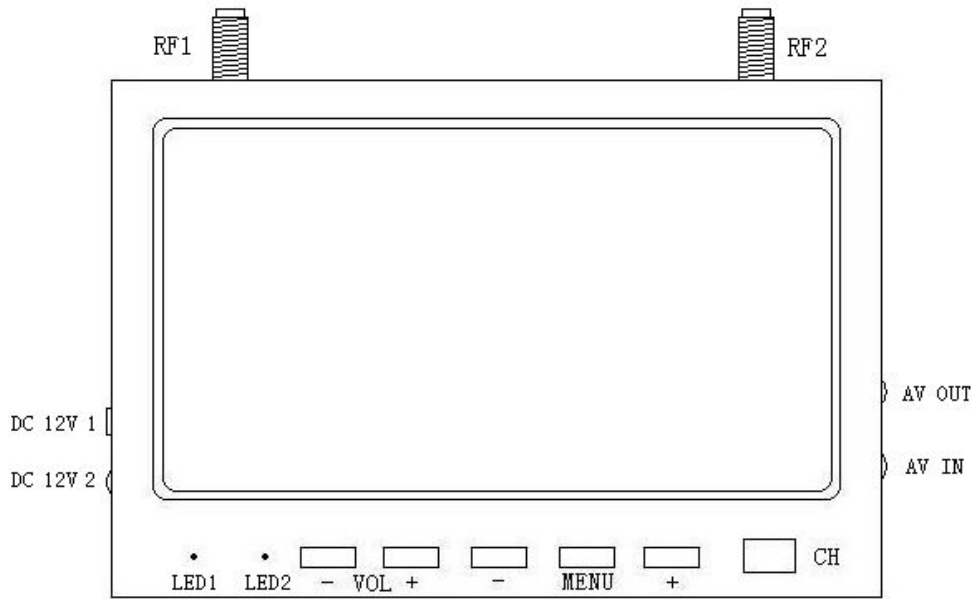


Figure 1

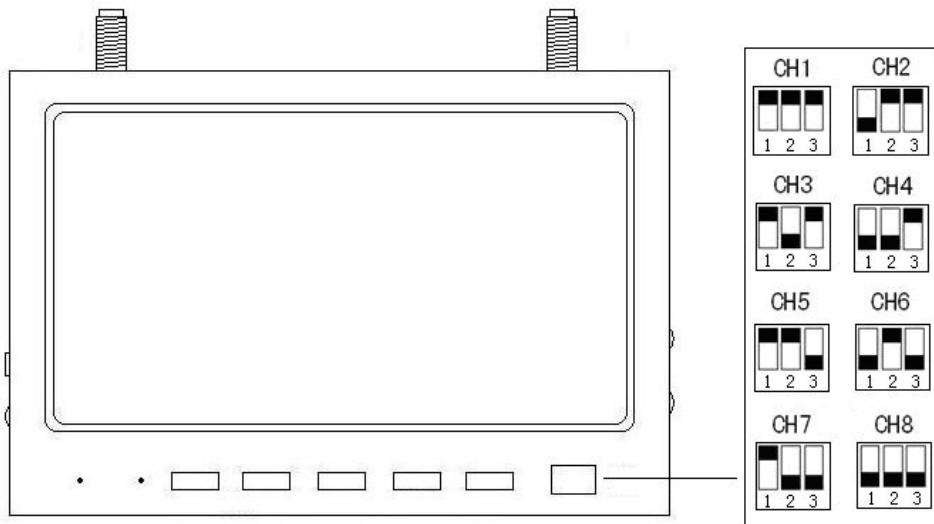


Figure 2

1. Connect the power adapter or Battery to DC 12V 1 or DC 12V 2 after the transmitter is ready. Power LED is on and RX1 and RX2 are flashing alternately. RF1 is to RX1 and RF2 is to RX2, better signal first.(See Figure1). RF1 and RF2 must be in the same Channel.
2. Plug AV cable to AVOUT and connect the other end to the Monitor, then you can view the images from the transmitter.
3. Plug AV cable into AV IN(Figure1),LCD will display the external AV signals automatically.
4. Buttons (See Figure1)
 - ① VOL-Volume-
 - ② VOL+Volume+
 - ③ MENU: Setup-Brightness, Contrast, Color, Language
 - ④ - Minus
 - ⑤ + Plus